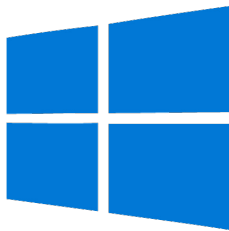
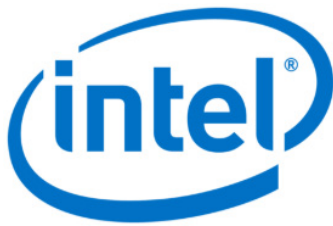


# Door Tablet MM

## Workplace Signage Touch Display



*All you need in a workplace signage display.  
Part of the Door Tablet WIN family.*



### CPU

Low-Power System with Intel® Braswell® processor N3160



### RFID supports for both NFC & HiD

Supports interactive RFID/HiD and more. Enables easy identification of users at low cost. Optional.



### Power over Ethernet (POE+)

Single cable, clean installation. IEEE 802.3at standard.



### LED Lights

Attractive LED lights on both sides of device, visible from the front, for instant meeting status identification.



### Solid Chassis Design

3.1cm in depth when installed on walls using optional fittings.



### Fanless

Fanless Cooling System and Ultra-low Power Consumption.



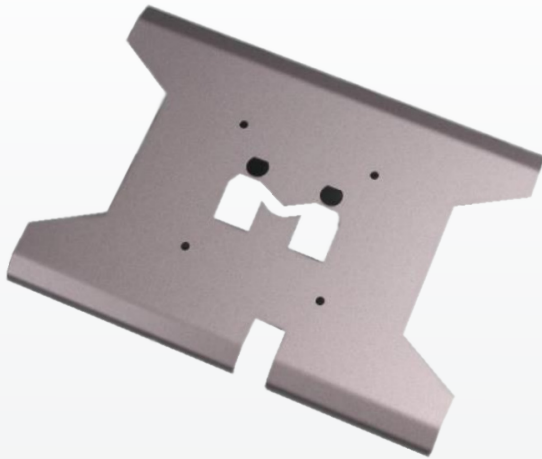
### Tempered Glass

Surface hardness & anti-shatter. Allows frequent usage of the display for intensive use.



### Display

11.6" 1366 x 768 Resolution with Projected Capacitive Multi-Touch (P-CAP).



## Features

CPU	Intel® Braswell® processor N3160
Memory	4GB DDR3L 1600 SODIMM
Storage	64GB mSATA
OS	Windows 10 IoT
LAN	Dual Intel® I210-AT GbE and AC Wifi
PoE+	Yes

## Display

Size*	11.6"
Resolution (Max.)	1366 x 768
Brightness	350cd/m
Max Colors	16.7M
Viewing angle (H/V)	-85-85/-85-85

\* Exact sizes may change due to further improvements.

## I/O Interface

Ethernet	RJ45 (100M/1000 Mbps)
USB	3x USB3
Speaker	1W
RFID	Elatec Nano 125KHz and 13.56MHz
Video ports	HDMI Output

## Mechanical

Dimension	12.36" x 7.76" x 1.2"
Weight	6.75 lbs
Mounting	VESA Mount(75x75mm)
Housing	Metal
Environment	Operating Temp. 0-50°C Humidity: 10 to 85%
Power	DC 12V, 1.5A
Power Certification	CE/FCC/RoHS
Certification	CE/FCC/RoHS/UL

<https://door-tablet.com> | [sales@door-tablet.com](mailto:sales@door-tablet.com)

UK: +44 800 910 1131 | USA: +1 407 545 5925

Server and Door Tablet WM software are available for download after registration

Windows software is available from door-tablet.com - Door Tablet WIN Package

