

# Door Tablet MM

## Workspace Signage Touch Display



Our largest purpose-built touchscreen tablet that runs on Microsoft Windows is placed outside your meeting spaces. Part of the Door Tablet WIN family



### Easy to Install

Works “out of the box”. Mounting is optional and can be provided by us. This makes it easy to mount on most surfaces including glass, brick and metal. Easily connect to a Door Tablet Motion Sensor using a USB cable.



### LED Lighting on the Sides

Bright and colorful LED lights on the sides clearly signal that a room is free or busy and are visible from a distance - so there is no need to walk up to a room to see its status.



### eMMC and mSATA Storage

No reason to panic in the event of a sudden power loss as the Door Tablet MM has 64GB mSATA storage and eMMC ensuring any data on the MM is not corrupted.



### Attractive and Sturdy

It is sleek and slim (3.6cm deep) with 11.6” high resolution (1366 x 768 dpi) full color touchscreen meaning it not only looks good, but the display is easy to read and provides smooth interaction. The screen is tempered glass meaning it is tough and easy to clean.



### Readable at Wide Viewing Angles

The display with Projected Capacitive Multi-Touch (P-CAP) ensures the screen can be read comfortably at a distance and at wide angles so there’s no need to get up close to read what’s being displayed.



### Power over Ethernet (PoE+) Built-in

A single PoE+ cable enables a clean installation and the important benefit of full power management to save costs and the environment. Shut down and restart screens as needed. Requires 27W PoE.



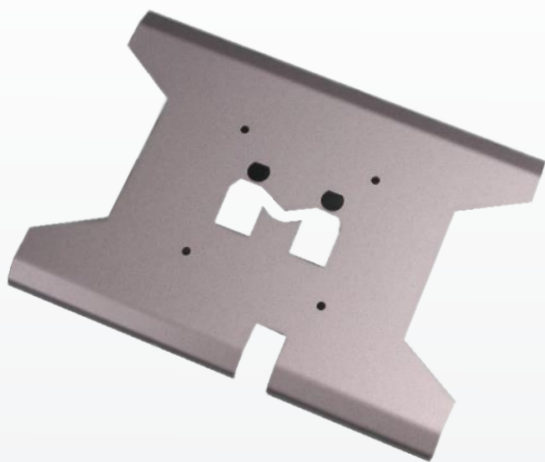
### Low-Power System with Intel Processor

A fanless cooling system ensures silent running and ultra-low power consumption for ultimate power efficiency. With Intel inside you are assured a reliable system.



### RFID Supports for NFC & HiD Built-in

Optional RFID/Mifare/FeliCa/HiD card types enable easy identification of users entering rooms by tapping in and out of meetings. Administrators can audit room usage, control who can book rooms and even decide who can enter rooms.



## Features

CPU	Intel® Braswell® processor N3160
Memory	4GB DDR3L 1600 SODIMM
Storage	64GB mSATA
OS	Windows 10 Pro
LAN	Dual Intel® I210-AT GbE and AC Wi-Fi
PoE+	Yes
Wi-Fi	Yes

## Display

Size*	11.6"
Resolution (Max.)	1366 x 768
Brightness	350cd/m
Max Colors	16.7M
Viewing angle (H/V)	-85-85/-85-85

## I/O Interface

Ethernet	RJ45 (100M/1000 Mbps)
USB	3x USB3
Speaker	1W
RFID	Elatec Nano 125KHz and 13.56MHz
Video ports	HDMI Output

## Mechanical

Dimensions	12.36" x 7.76" x 1.2"
Weight	6.75 lbs
Mounting	VESA Mount(75x75mm)
Housing	Metal
Environment	Operating Temp. 0-50° C Humidity: 10 to 85%
Power	DC 12V, 1.5A
Power Certification	CE/FCC/RoHS
Certification	CE/FCC/RoHS/UL

<https://door-tablet.com> | [sales@door-tablet.com](mailto:sales@door-tablet.com)

UK: +44 800 910 1131 | USA: +1 407 545 5925

Server and Door Tablet WM software are available for download after registration  
Windows software is available from door-tablet.com - Door Tablet WIN Package

